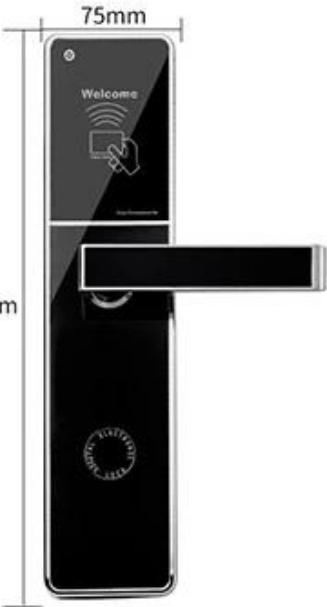


## Безопасный замок с картой RFID

# Detail Parameters

High Quality Life Choices

	Type:	RF hotel Lock DH-8505
	Material:	304 stainless steel
	Card Type:	ID, TEMIC, IC
	Unlock Ways:	Smart Card or Mechanical key
	Card reading current:	$\leq 20$ mA
	Static consumption:	$\leq 15$ u A
	Working Temperature:	-20°C~+70°C
	Opening current:	300 mA(last for 0.3s)
	Humidity:	$\leq 95\%$ RH
	Inductive distance:	$\leq 5$ cm
	Anti-static electricity:	$> 15,000$ V
	Battery:	4 pieces of 5# normal battery (6V)
	Lock Size:	309*75*19mm



# Induction Card Opening DH-8505

304 Stainless Steel | Smart Card Or Mechanical Key | High Security

>>

Formal Wear  
Silvery



<<

Upside Down  
Golden



# Management Collocation

Other accessories need to be purchased in addition to the lock

**Software:** It is management system. Work on Window XP / 7 / 8 / 10 (free).

Simple and intuitive. Compatible with most of the common property management systems(PMS) interface.

Can manages the locking plan 64,000 doors.

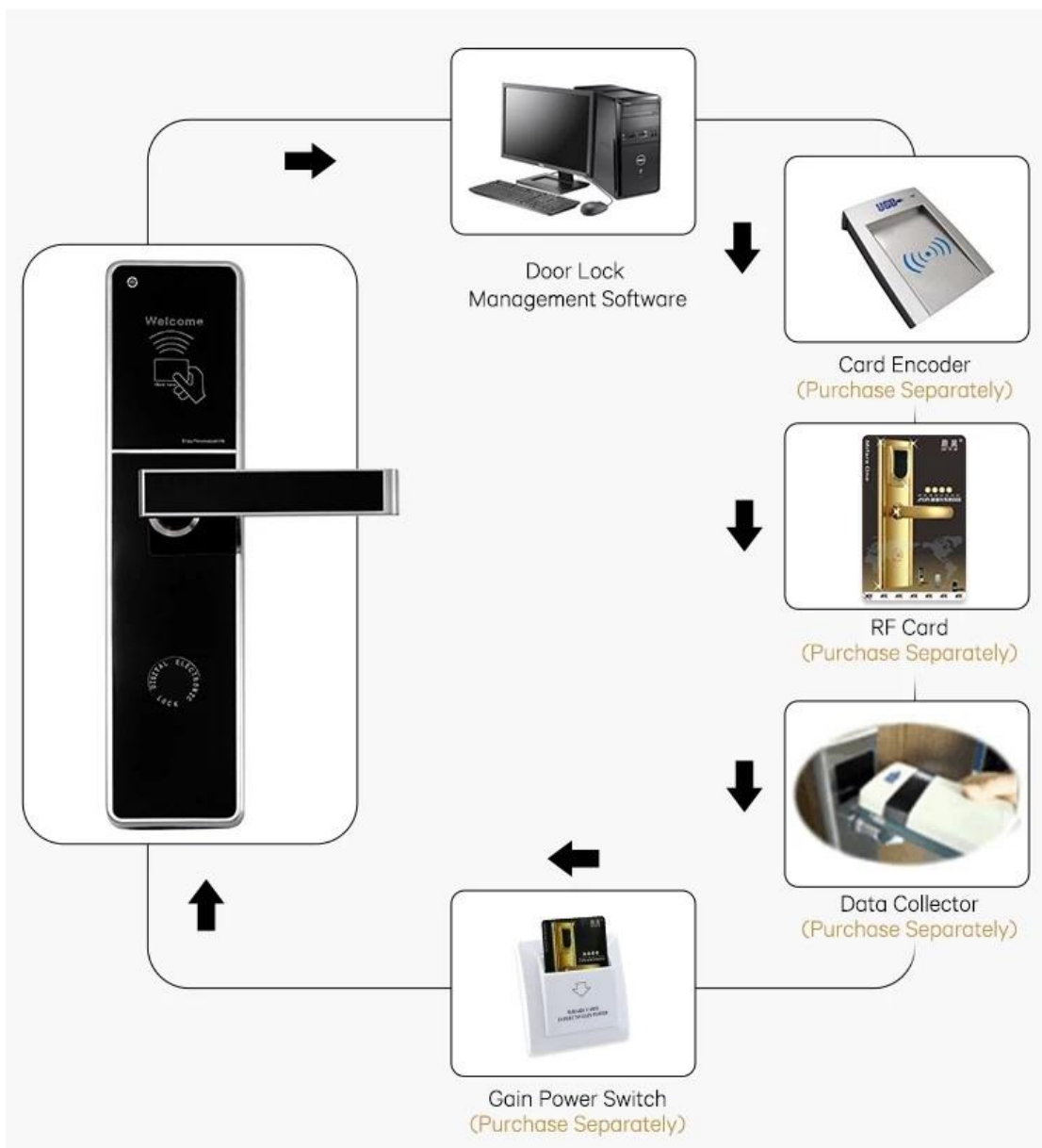
**Computer:** It is used to install lock management software, prepared by hotel.

**Card encoder :** Device for reading and encoding(issue) the card. USB port. Serveral encoders can work simultaneously in a network.

**Cards :** To open lock and get power from the energy saving switch, one Lock need at least one pcs card, for opend door. 100,000 times durable.

**Energy-saving switch:** device allow the key card to turn on the lighting system and air controller of the room.

**Lock :** Install onto the door. Independent, wireless, battery-operated. It stores latest 220 events. Perfect reading. Advanced security performance.



# Selective Color

High Quality Life Choices



Golden



Silvery



Bronze

наш сертификаты

## OUR CERTIFICATE



Связаться с нами

**CONTACT US**



**Sincerely for your service**

**You are welcome to come to consult**

**Contact:** Winnie Liang

**Cellphone/Wechat/Whatsapp:** +86 13602510930

**Skype:** udohow1

**Email:** info@udohow.com

**Web:** www.udohow.com

**Click Back Home**