

Atacado 12V não toque na porta botão de liberação da saída DH-K810



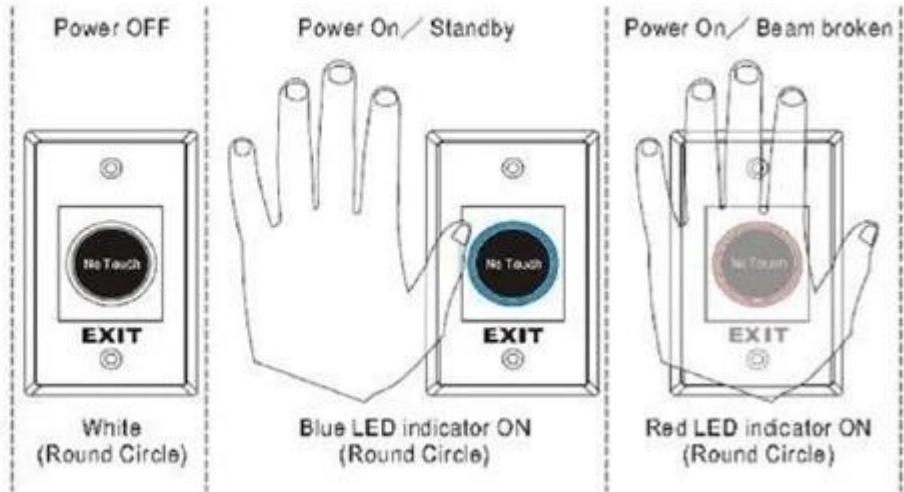
- Sensor de saída sem toque / sem toque (detecção difusa)
- Tecnologia óptica / infravermelha
- Proteção de ingresso IP-55 / Placa de aço inoxidável SUS 304
- Fácil de usar (proteção saudável)
- Livre de propagação de doenças contagiosas
- Faixa de detecção: 0.1 ~ 10 cm
- Aplicação: Controle de portão / porta / saída / automação
- Alta capacidade de contato seco do relé (3A / AC120V, DC30V)
- Normalmente aberto / Normalmente fechado / Saída de relé comum
- Indicadores duplos de led para sensor em espera ou aproximado:
 - (1) Modo de espera do sensor: LED AZUL aceso
 - (2) Visitantes que se aproximaram do sensor em 10 cm: LED VERMELHO aceso

Mais fotos

LED Indicator



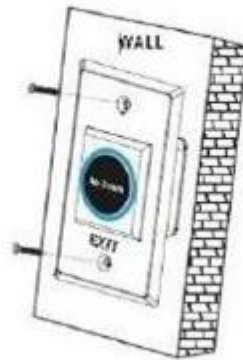
A: Black/PC Lens
B: Round Shape LED Indicator



Sensing Range



Installation



Red LED Indicator:
Power ON (Standby)



Green LED Indicator:
Power ON (Triggered)



Blue LED Indicator:
Power ON (Standby)



Red LED Indicator:
Power ON (Triggered)



Nosso companhia

ABOUT US COMPANY INTRODUCTION

UDOHOW Electronics Co., Limited is a high-tech enterprise located in Guangdong Province, China. We're one of the leading manufacturers specialized in Intelligent Locks and Access Control Products including: Hotel Locks, Fingerprint Locks, Keypad Locks, Cabinets Locks, Electric Locks, Exit Switches and other related security access control products.

Our products have received good comments and trust of customers by superior quality, advanced innovation and considerate service.

[+ View More](#)



FACTORY / WORKSHOP / EXHIBITION



Nosso certificados

OUR CERTIFICATE



Contate-Nos

CONTACT US



Sincerely for your service

You are welcome to come to consult

Contact: Winnie Liang

Cellphone/Wechat/Whatsapp: +86 13602510930

Skype: udohow1

Email: info@udohow.com

Web: www.udohow.com

Click Back Home