

Atacado 12V infravermelho [Botão Sair](#) Sem Touch Door Open Switch para controle de acesso



- Sensor de saída sem toque / livre de toque (detecção difusa)
- Tecnologia Ótica / Infravermelha
- Proteção de Ingresso IP-55 / Placa de aço inoxidável SUS 304
- Fácil de usar (proteção saudável)
- Livre de propagação de doenças contagiosas
- Faixa de detecção: 0,1 ~ 10 cm
- Aplicação: Portão / Porta / Saída / Controle de automação
- Alta capacidade de contato seco do relé (3A / AC120V, DC30V)
- Normalmente aberto / Normalmente fechado / Saída de relé comum
- Indicadores duplos de LED para sensor em espera ou aproximado:  
(1) Sensor em espera: LED AZUL LIGADO  
(2) Visitantes que se aproximaram do sensor em 10 cm: LED VERMELHO LIGADO

**Maisfotos**



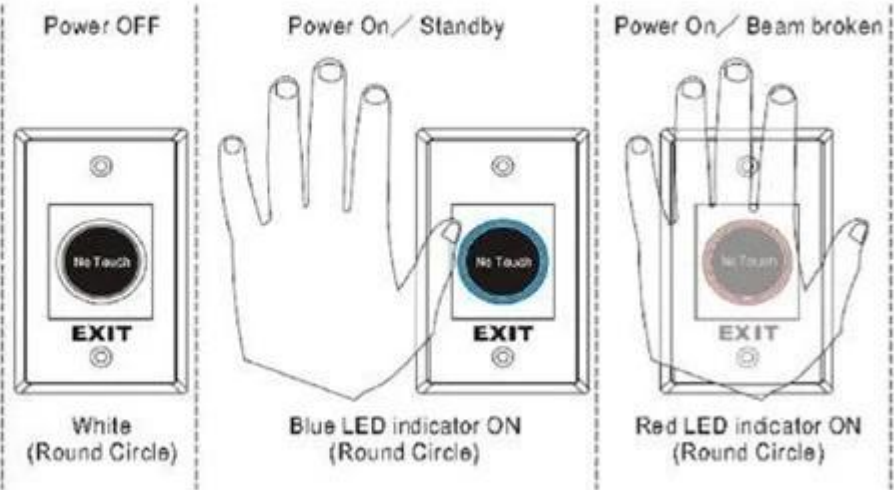
[udohow.en.alibaba.com](http://udohow.en.alibaba.com)



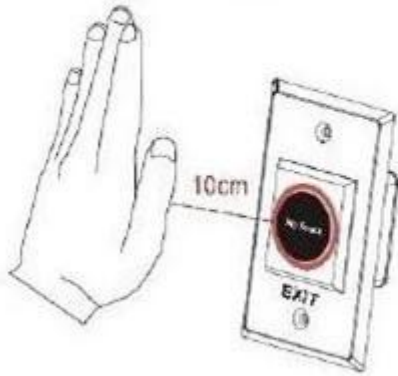
## LED Indicator



A: Black/PC Lens  
B: Round Shape LED Indicator



## Sensing Range



## Installation



Red LED Indicator:  
Power ON (Standby)



Green LED Indicator:  
Power ON (Triggered)



Blue LED Indicator:  
Power ON (Standby)



Red LED Indicator:  
Power ON (Triggered)



# Nossocompanhia

## ABOUT US COMPANY INTRODUCTION

UDOHOW Electronics Co., Limited is a high-tech enterprise located in Guangdong Province, China. We're one of the leading manufacturers specialized in Intelligent Locks and Access Control Products including: Hotel Locks, Fingerprint Locks, Keypad Locks, Cabinets Locks, Electric Locks, Exit Switches and other related security access control products.

Our products have received good comments and trust of customers by superior quality, advanced innovation and considerate service.

[+ View More](#)



## FACTORY / WORKSHOP / EXHIBITION



# Nossocertificados

## OUR CERTIFICATE



# Contate-Nos

**CONTACT US**



## **Sincerely for your service**

**You are welcome to come to consult**

**Contact:** Winnie Liang

**Cellphone/Wechat/Whatsapp:** +86 13602510930

**Skype:** udohow1

**Email:** info@udohow.com

**Web:** www.udohow.com

**Click Back Home**