

Ang DH-2400SL ay isang uri ng [pag-gunting ng kandado](#), sa pamamagitan ng paggamit ng prinsipyo ng electromagnetic force upang akitin ang armature plate, at pagkatapos ay mai-stuck ang dalawang nakapirming mga binti sa mga butas sa armature plate. Sa pagsasama ng lakas ng lakas na electromagnetic at lakas ng paghawak ng mga nakapirming binti, ang shear lock ay maaaring lumikha ng isang napakalaking puwersang kumupkod.

Product Advantage

For double swing doors
Suitable for 90 or 180 degrees double swing doors

Relock function
When the lock is unlocked, it will lock the door automatically according to the program.

Smart circuit design
With time delay function, door signal output and lock signal output

All-metal lock body
With integral profiles and precise work, this lock is stronger and more durable.

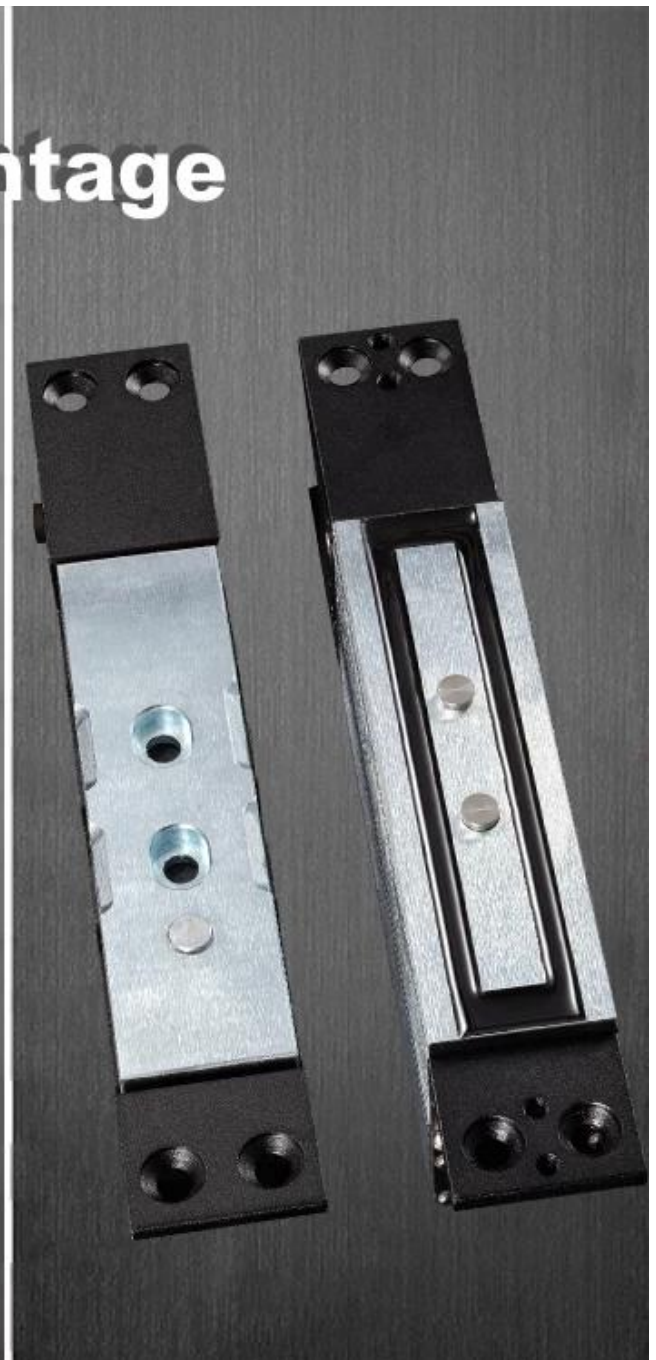
Ultra durable electromagnetic design
Professional and durable electromagnetic design with over 500,000 times qualified test.

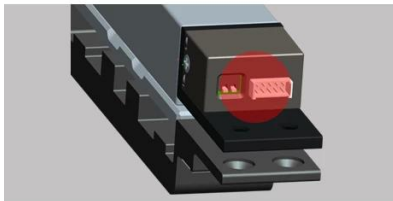
One-piece and small size
One-piece design and small size, which will be easy to install to any kinds of door frame

With both magnetic and latch design
By using electromagnetic force and latch design, the holding force of this shearing lock can achieve up to 1200kg

Armature plate with guide groove
With guide grooves at both sides of the armature plate

Door/lock status sensor
A set of NO/COM door signal output contact and a set of NO/NC/COM lock signal output contact



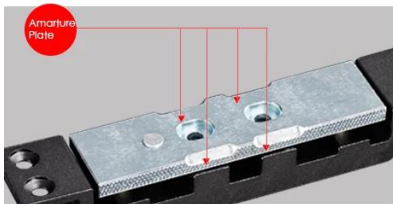
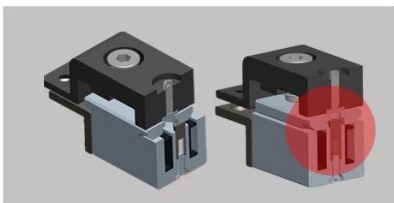


Intelligent circuit

Time Delay&Double Signals output

Lock It Twice

when there is inappropriate locking,the lock will lock it again,guaranteeing for locking successfully

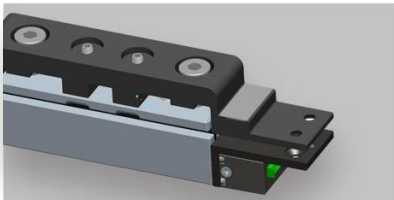


Amarture Plate

Leaning guide groove on the side of amarture plate,convenient for locking

Metal-Made Lock

Metal-made structure makes it sturdy& durable

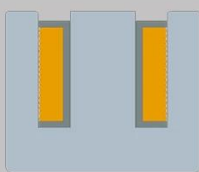
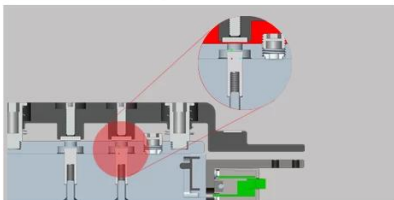


Integrated&Miniature Design

Integrated and miniature design,- making it convenient for installation on any kinds of door frame

Magnetism&Bolt

Adopt electromagnetic force and bolt design,making it reaches 1200kgs holding force,more safer.

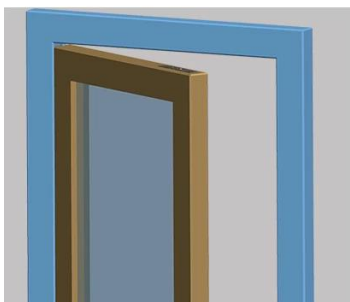


Durable Electromagnetism

Adopt durable electromagnetism design,sucessful 500000 operations(it can work for 5-10 years based on test)

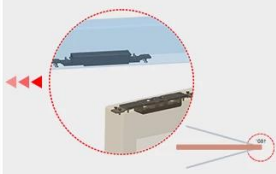
Door/Lock Double Signal Contact

NO/COM door signal output,NO/NC/COM lock signal output,satisfy with high-level security requirement in access control



Suitable For Two-Way Opening

Suitable for 90 degree or 180 degree opening directions



Teknikal na Parameter:

Model No .: DH-2400SL

Holding Force: 2600Lbs (1200kg)

Lock: 182L X 30W X 25D (mm)

Armature Plate: 182L X 30W X 23.6D (mm)

Suplay ng kuryente: DC 12V

Kasalukuyang Pagpapatakbo: 850mA

Kasalukuyang Humahawak: 400mA

Pagkaantala sa Oras: 0/5/10 / 15sec.

Naka-lock ang mga LED Red; Na-unlock ang mga berdeng palabas

Kalamangan:

Para sa dobleng pintuan ng swing: Angkop para sa 90 o 180 degree na doble na pintuan ng swing;

Pag-andar muli: Kapag ang lock ay naka-unlock, awtomatiko nitong isasara ang pinto alinsunod sa programa.

Disenyo ng matalinong circuit: Sa pagpapaandar ng oras na pagkaantala, output signal ng pinto at output ng lock signal

Katawan-ng-lock na katawan: Sa mga integral na profile at tumpak na trabaho, ang lock na ito ay mas malakas at mas matibay.

Ultra matibay na disenyo ng electromagnetic: Propesyonal at matibay na disenyo ng electromagnetic na may higit sa 500,000 beses na kwalipikadong pagsubok.

Isang piraso at maliit na sukat: Isa-piraso na disenyo at maliit na sukat, na kung saan ay madaling i-install sa anumang uri ng frame ng pinto

Na may parehong disenyo ng magnetiko at aldaba: Sa pamamagitan ng paggamit ng electromagnetic force at disenyo ng aldaba, ang lakas na humahawak ng shearing lock na ito ay maaaring makamit hanggang sa 1200kg

Armature plate na may gabay na uka: Sa mga gabay na uka sa magkabilang panig ng armature plate;

Sensor ng katayuan ng pinto / lock: Isang hanay ng contact ng output ng signal na WALANG / COM at isang hanay ng contact na output ng signal na NO / NC / COM

CONTACT US



Sincerely for your service

You are welcome to come to consult

Contact: Yimo Yang

Cellphone/Wechat/Whatsapp: +86 13612936220

Skype: udohow3

Email: udohow1@udohow.com

Web: www.udohow.com

HOME