

DH-2400SL 2

# Product Advantage

**For double swing doors**  
Suitable for 90 or 180 degrees double swing doors

**Relock function**  
When the lock is unlocked, it will lock the door automatically according to the program.

**Smart circuit design**  
With time delay function, door signal output and lock signal output

**All-metal lock body**  
With integral profiles and precise work, this lock is stronger and more durable.

**Ultra durable electromagnetic design**  
Professional and durable electromagnetic design with over 500,000 times qualified test.

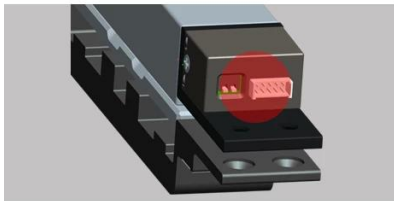
**One-piece and small size**  
One-piece design and small size, which will be easy to install to any kinds of door frame

**With both magnetic and latch design**  
By using electromagnetic force and latch design, the holding force of this shearing lock can achieve up to 1200kg

**Armature plate with guide groove**  
With guide grooves at both sides of the armature plate

**Door/lock status sensor**  
A set of NO/COM door signal output contact and a set of NO/NC/COM lock signal output contact



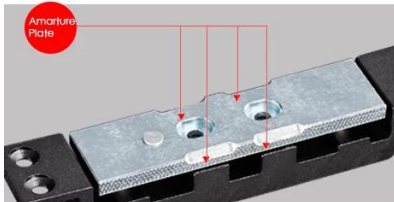
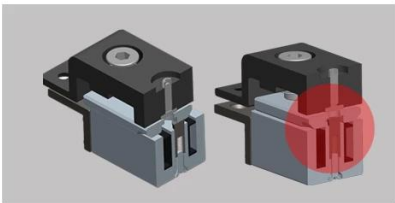


### Intelligent circuit

Time Delay&Double Signals output

### Lock It Twice

when there is inappropriate locking,the lock will lock it again,guaranteeing for locking successfully

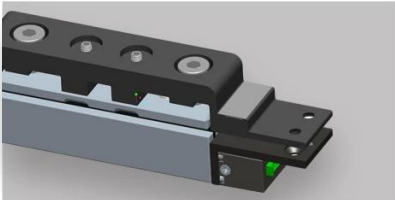


### Amarture Plate

Leaning guide groove on the side of amature plate,convenient for locking

### Metal-Made Lock

Metal-made structure makes it sturdy& durable

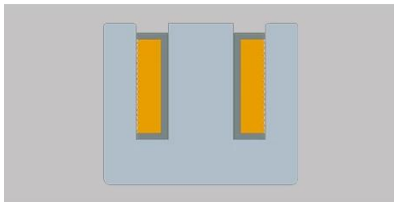
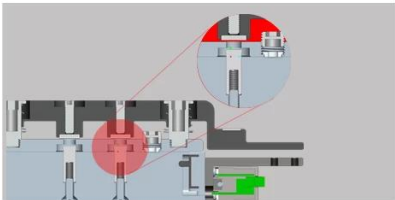


### Integrated&Miniature Design

Integrated and miniature design,- making it convenient for installation on any kinds of door frame

### Magnetism&Bolt

Adopt electromagnetic force and bolt design,making it reaches 1200kgs holding force,more safer.

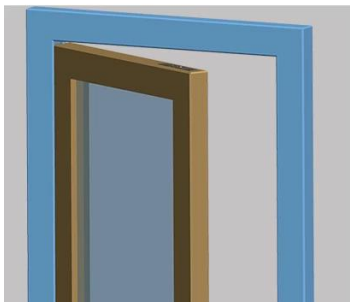
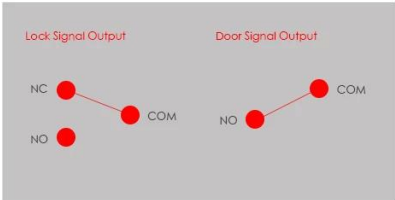


### Durable Electromagnetism

Adopt durable electromagnetism design,sucessful 500000 operations(it can work for 5-10 years based on test)

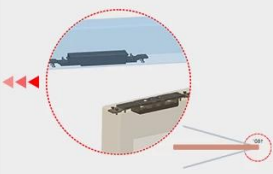
### Door/Lock Double Signal Contact

NO/COM door signal output,NO/NC/COM lock signal output,satisfy with high-level security requirement in access control



### Suitable For Two-Way Opening

Suitable for 90 degree or 180 degree opening directions



UDOHOW

UDOHOW DH-2400SL

2600Lbs/1200kg

182L X 30W X 25D mm

182L X 30W X 23.6D mm

DC 12V

850mA

400mA

0/5/10/15

LED

90

180

500,000

1200kg

NO / COM NO / NC / COM

CONTACT US



**Sincerely for your service**

**You are welcome to come to consult**

**Contact:** Yimo Yang

**Cellphone/Wechat/Whatsapp:** +86 13612936220

**Skype:** udohow3

**Email:** udohow1@udohow.com

**Web:** www.udohow.com

HOME