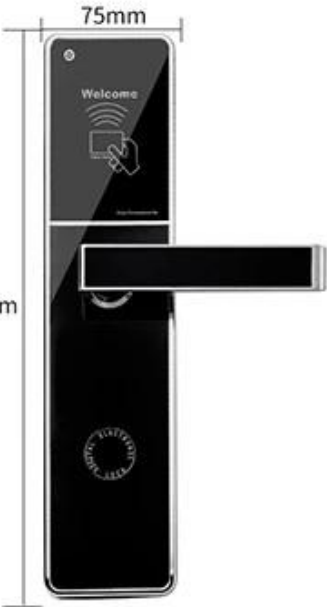


## Türschloss für Hotelzimmer mit Managementsystem

# Detail Parameters

High Quality Life Choices

	Type:	RF hotel Lock DH-8505
	Material:	304 stainless steel
	Card Type:	ID, TEMIC, IC
	Unlock Ways:	Smart Card or Mechanical key
	Card reading current:	≤20 mA
	Static consumption:	≤15u A
	Working Temperature:	-20`C~+70`C
	Opening current:	300 mA(last for 0.3s)
	Humidity:	≤ 95% RH
	Inductive distance:	≤5cm
	Anti-static electricity:	>15,000 V
	Battery:	4 pieces of 5# normal battery (6V)
	Lock Size:	309*75*19mm

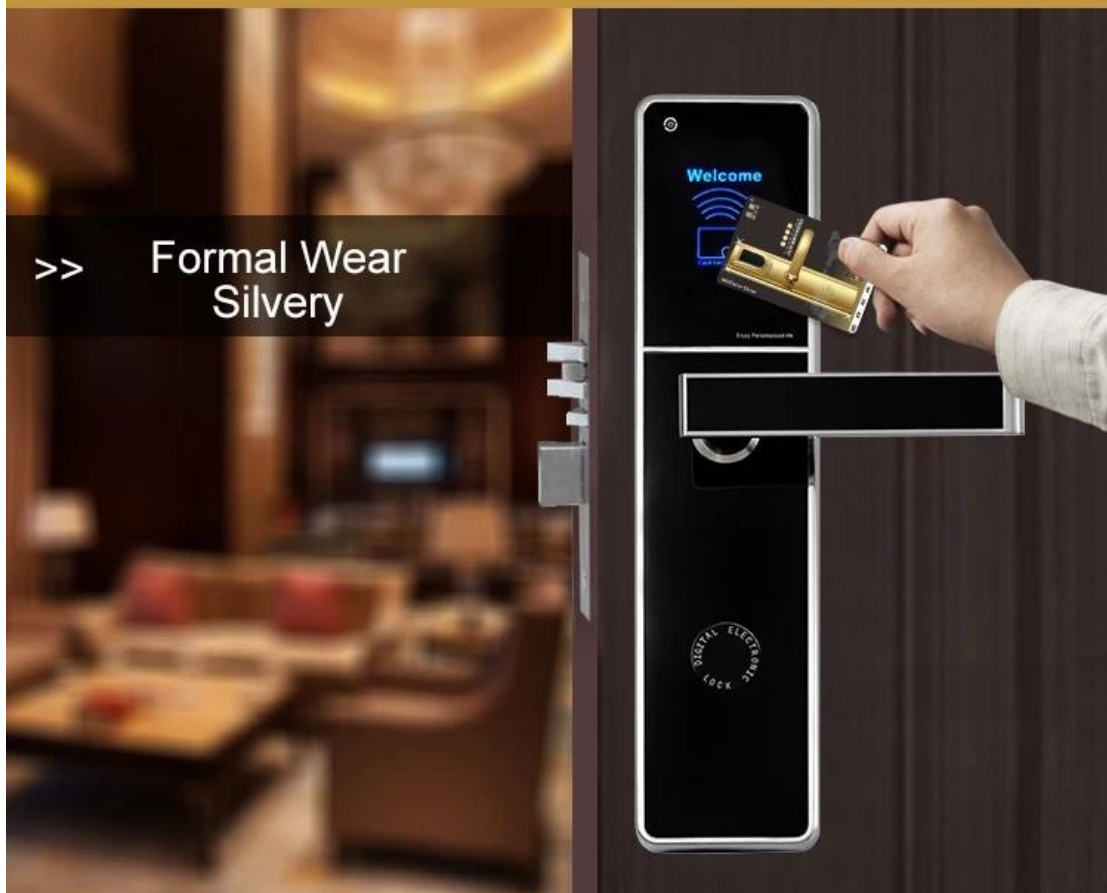


# Induction Card Opening DH-8505

304 Stainless Steel | Smart Card Or Mechanical Key | High Security

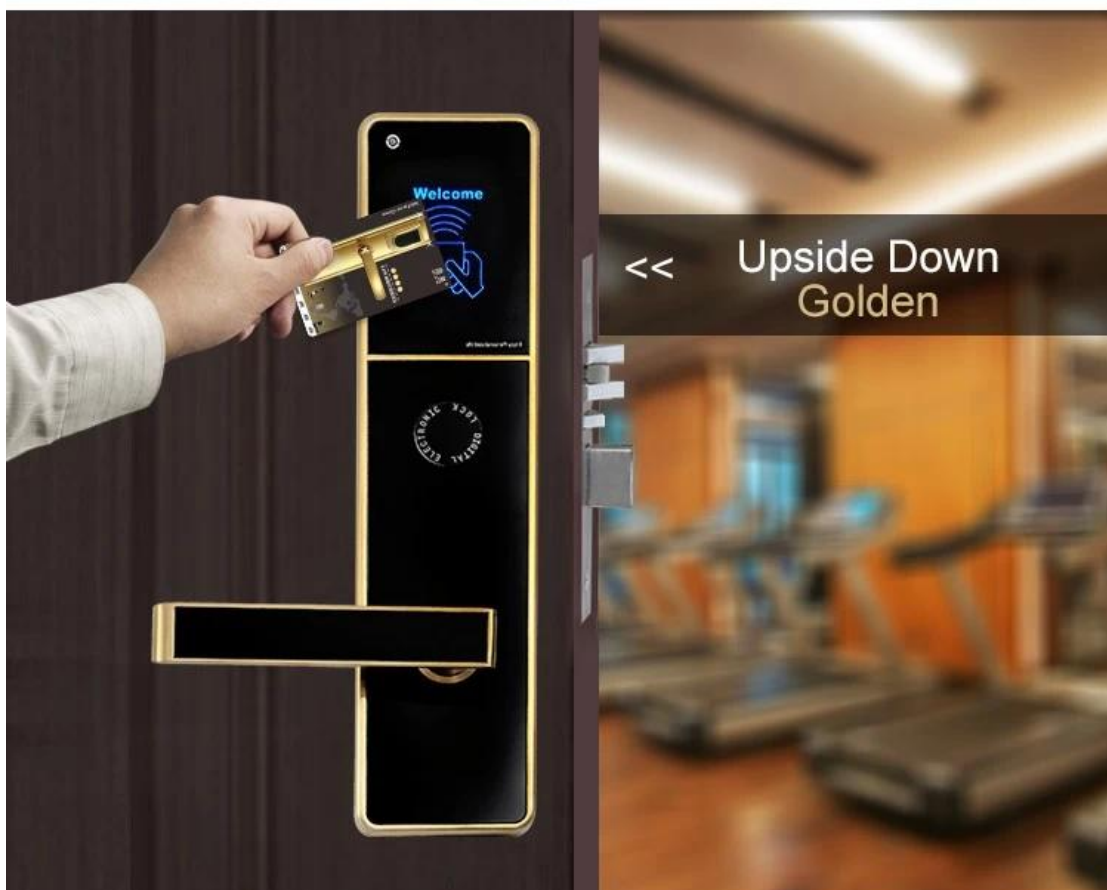
>>

Formal Wear  
Silvery



<<

Upside Down  
Golden



# Management Collocation

Other accessories need to be purchased in addition to the lock

**Software:** It is management system. Work on Window XP / 7 / 8 / 10 (free).

Simple and intuitive. Compatible with most of the common property management systems(PMS) interface.

Can manages the locking plan 64,000 doors.

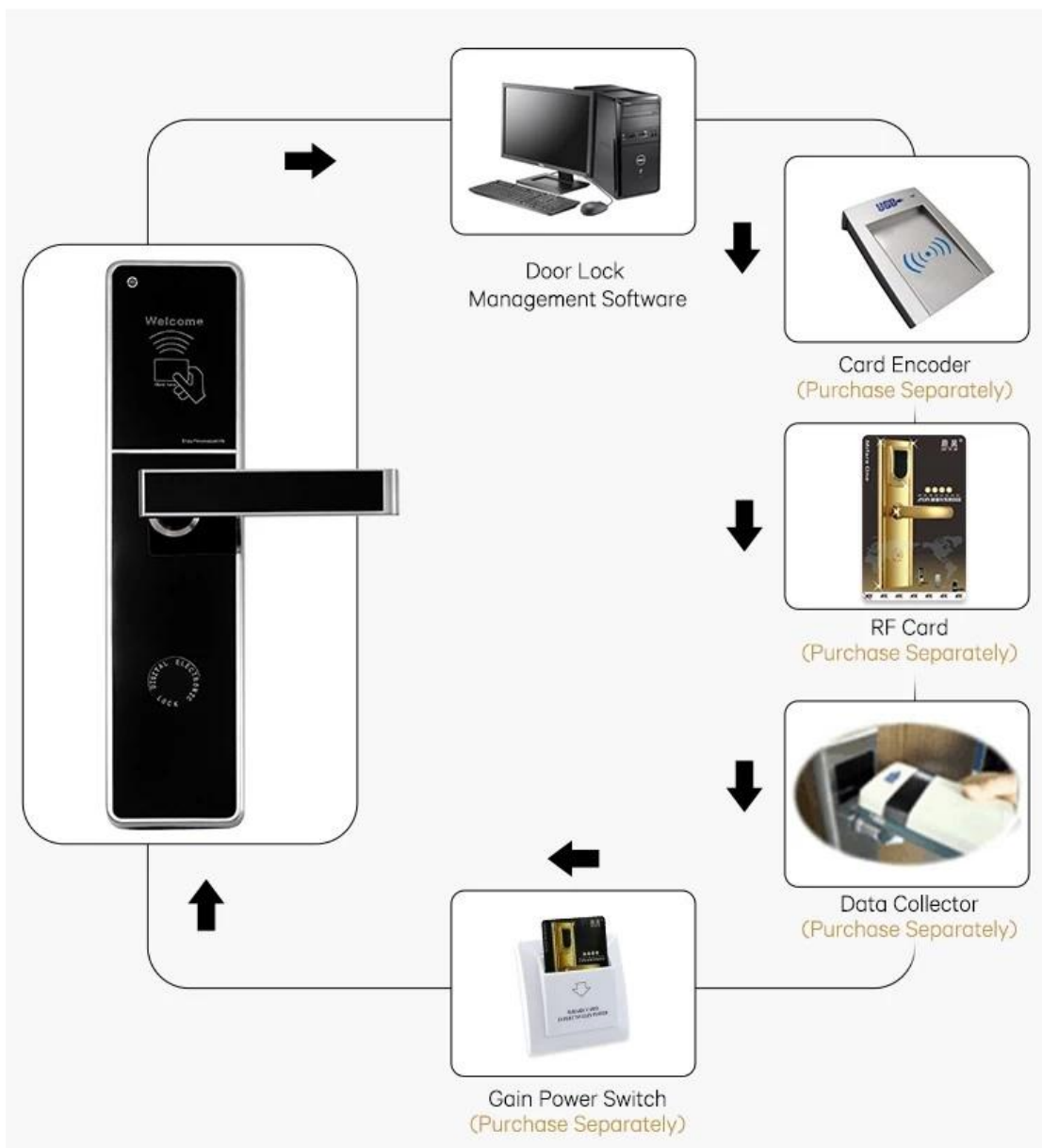
**Computer:** It is used to install lock management software, prepared by hotel.

**Card encoder :** Device for reading and encoding(issue) the card. USB port. Serveral encoders can work simultaneously in a network.

**Cards :** To open lock and get power from the energy saving switch, one Lock need at least one pcs card, for opend door. 100,000 times durable.

**Energy-saving switch:** device allow the key card to turn on the lighting system and air controller of the room.

**Lock :** Install onto the door. Independent, wireless, battery-operated. It stores latest 220 events. Perfect reading. Advanced security performance.



# Selective Color

High Quality Life Choices



Golden



Silvery



Bronze

Unser Zertifikate

## OUR CERTIFICATE





Kontaktiere uns

**CONTACT US**



**Sincerely for your service**

**You are welcome to come to consult**

**Contact:** Winnie Liang

**Cellphone/Wechat/Whatsapp:** +86 13602510930

**Skype:** udohow1

**Email:** info@udohow.com

**Web:** www.udohow.com

**Click Back Home**