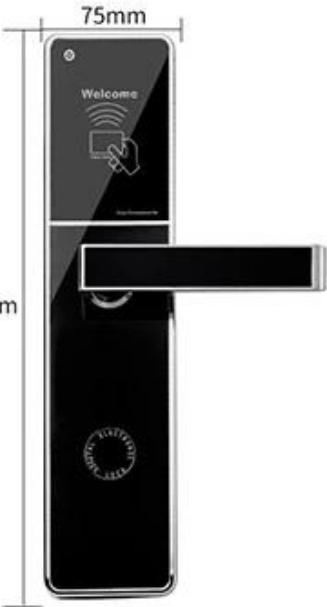
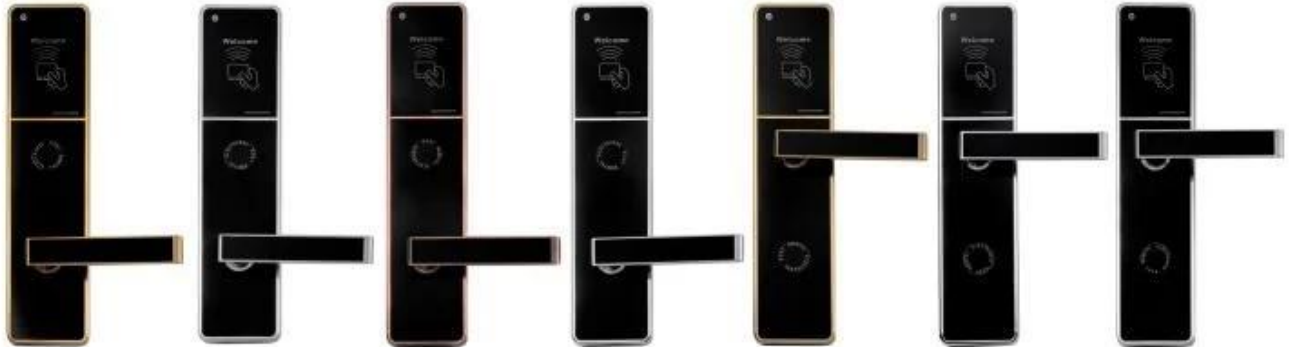


Detail Parameters

High Quality Life Choices

	Type:	RF hotel Lock DH-8505
	Material:	304 stainless steel
	Card Type:	ID, TEMIC, IC
	Unlock Ways:	Smart Card or Mechanical key
	Card reading current:	≤ 20 mA
	Static consumption:	≤ 15 u A
	Working Temperature:	-20°C~+70°C
	Opening current:	300 mA(last for 0.3s)
	Humidity:	$\leq 95\%$ RH
	Inductive distance:	≤ 5 cm
	Anti-static electricity:	$> 15,000$ V
	Battery:	4 pieces of 5# normal battery (6V)
	Lock Size:	309*75*19mm



Induction Card Opening DH-8505

304 Stainless Steel | Smart Card Or Mechanical Key | High Security

>>

Formal Wear
Silvery



<<

Upside Down
Golden



Management Collocation

Other accessories need to be purchased in addition to the lock

Software: It is management system. Work on Window XP / 7 / 8 / 10 (free).

Simple and intuitive. Compatible with most of the common property management systems(PMS) interface.

Can manages the locking plan 64,000 doors.

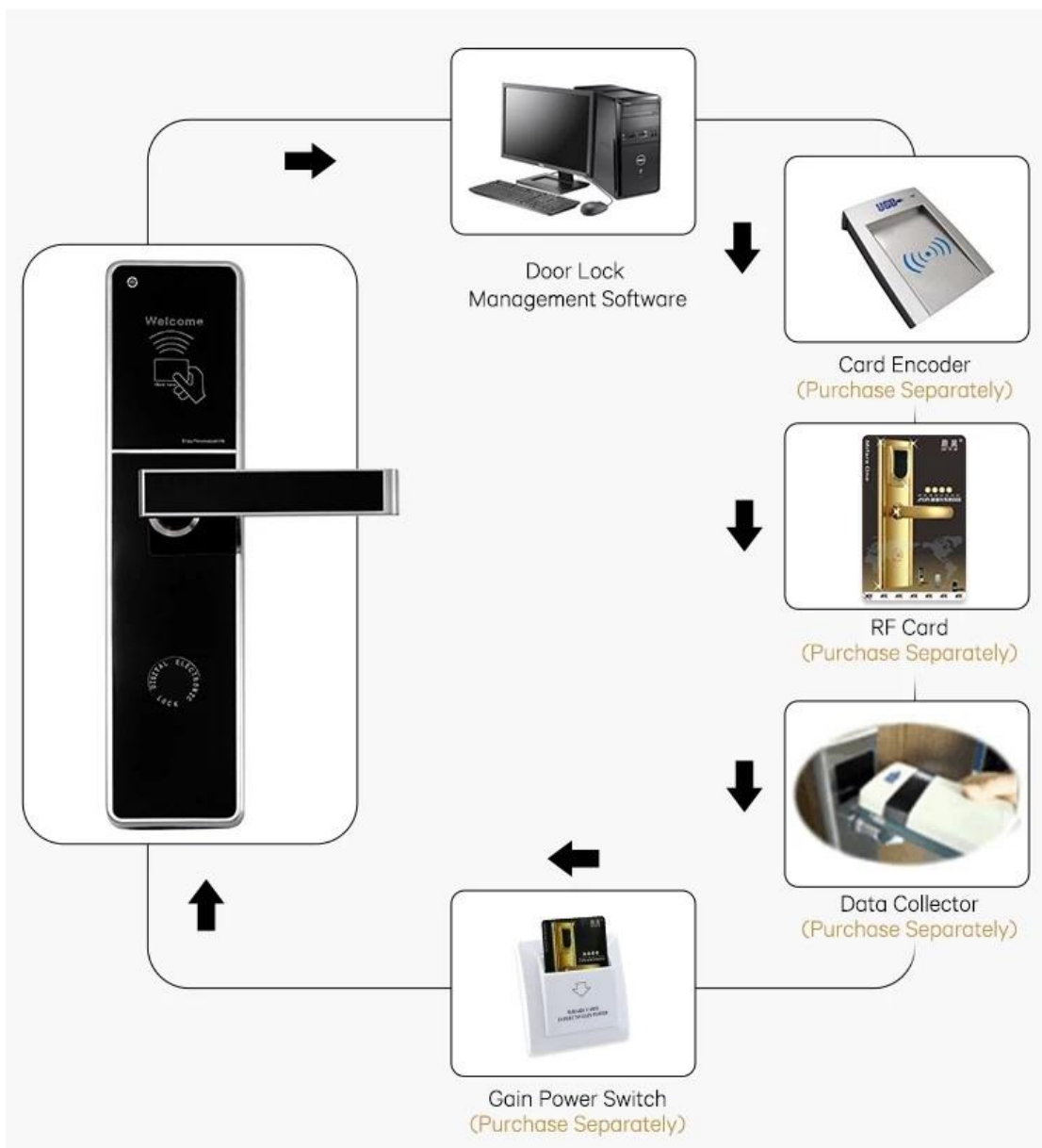
Computer: It is used to install lock management software, prepared by hotel.

Card encoder : Device for reading and encoding(issue) the card. USB port. Serveral encoders can work simultaneously in a network.

Cards : To open lock and get power from the energy saving switch, one Lock need at least one pcs card, for opend door. 100,000 times durable.

Energy-saving switch: device allow the key card to turn on the lighting system and air controller of the room.

Lock : Install onto the door. Independent, wireless, battery-operated. It stores latest 220 events. Perfect reading. Advanced security performance.



Selective Color

High Qualify Life Choices



Golden



Silvery



Bronze

لنا شهادات

OUR CERTIFICATE



اتصل بنا

CONTACT US



Sincerely for your service

You are welcome to come to consult

Contact: Winnie Liang

Cellphone/Wechat/Whatsapp: +86 13602510930

Skype: udohow1

Email: info@udohow.com

Web: www.udohow.com

Click Back Home